

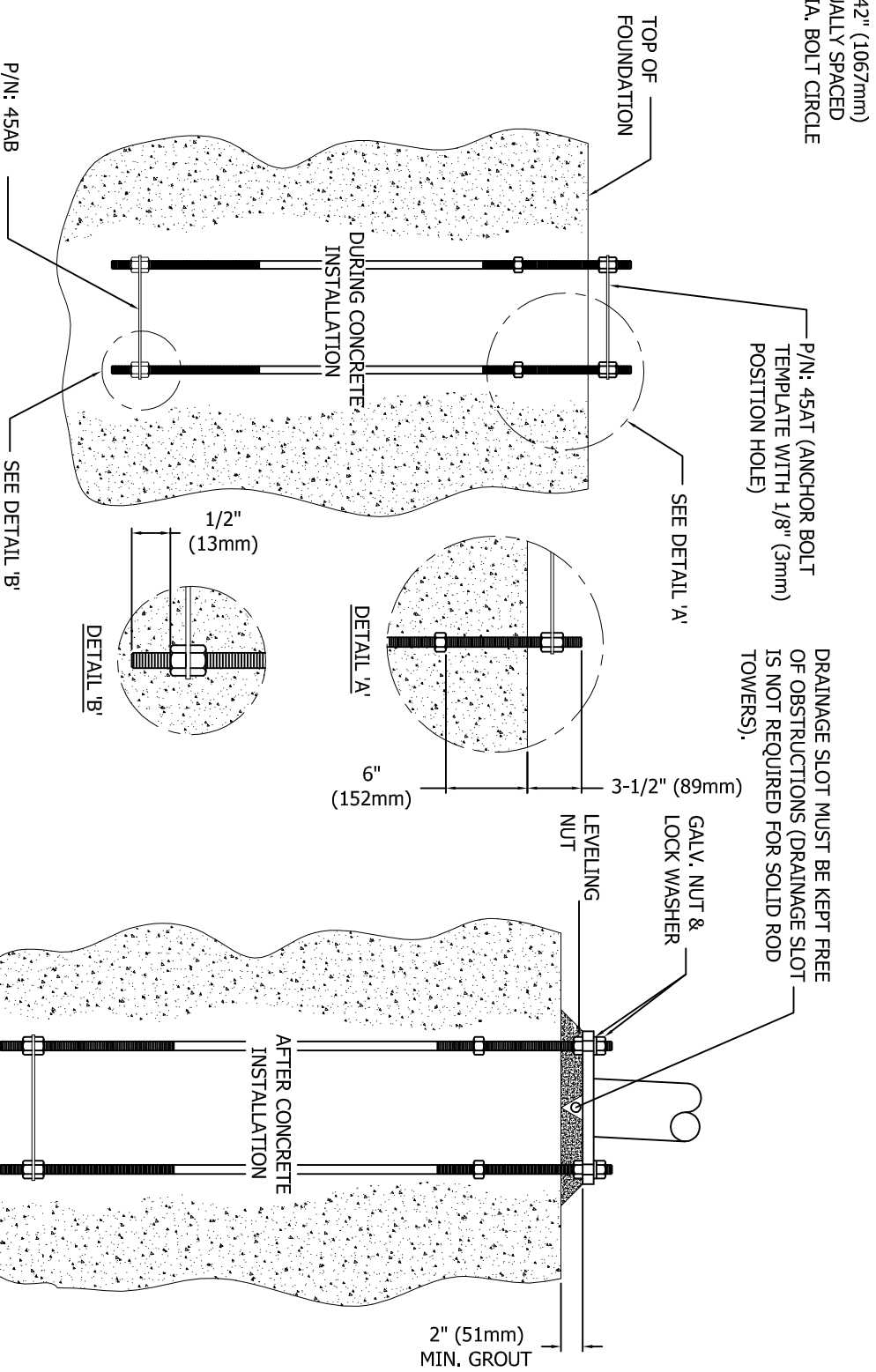
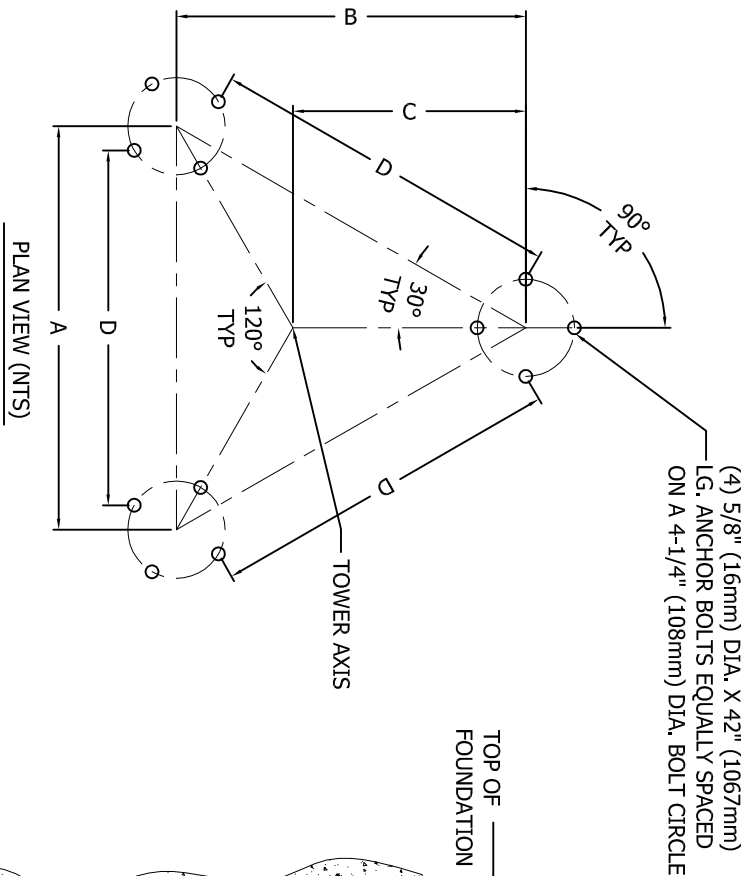
A	B	C	D
2'-0 1/4" (0.616M)	1'-9" (0.533M)	1'-2" (0.356M)	1'-10 1/8" (0.562M)

**ANCHOR BOLT INSTALLATION TOLERANCES**

1. FACE SPREAD DIMENSION CENTER-TO-CENTER OF ANCHOR BOLT CIRCLES - PLUS OR MINUS 1/16" (2mm) OR 1/16"(2mm) PER 20 FT. (6m) OF FACE SPREAD.
2. MAXIMUM DIFFERENCE BETWEEN ANY TWO FOUNDATION ELEVATIONS - 1/2" (13mm).
3. CONCRETE DIMENSIONS - PLUS OR MINUS 1" (25mm).
4. DEPTH OF FOUNDATION - PLUS 3" (76mm) OR MINUS 0".
5. DRILLED FOUNDATIONS OUT OF PLUMB - 1.0 DEGREE.
6. REINFORCING STEEL PLACEMENT - PER A.C.I. 301.
7. PROJECTION OF EMBEDMENTS - PLUS OR MINUS 1/8" (3mm).
8. VERTICAL EMBEDMENTS OUT OF PLUMB -1/2 DEGREE.
9. MAXIMUM DISTANCE FROM CENTERLINE OF ANCHOR BOLTS TO CENTERLINE OF FOUNDATION - 1/24 OF PIER DIAMETER UP TO A MAXIMUM OF 2" (50mm).
10. ANCHOR BOLT SPACING - 1/16" (2mm).
11. ANCHOR BOLT CIRCLE ORIENTATION - 1/4 DEGREE.
12. ANCHOR BOLT CIRCLE DIAMETER - PLUS OR MINUS 1/16" (2mm).

**iii WARNING iii**

- ENSURE DIMENSION 'D' IS CORRECT ON ALL FACES PRIOR TO PLACING CONCRETE.
- AFTER ANCHOR BOLTS ARE INSTALLED AND CONCRETE HAS TAKEN ITS INITIAL SET, ANCHOR BOLTS MUST NOT BE MOVED, BENT OR REALIGNED IN ANY MANNER. A NUT LOCKING DEVICE MUST BE INSTALLED ON ALL ANCHOR BOLTS.



**NOTES**

1. ALL ANCHOR BOLTS MUST MEET OR EXCEED REQUIREMENTS OF A.S.T.M. F1554-S2, S5 GRADE 105.
2. GROUT TO BE 5000 PSI MIN. ULTIMATE STRENGTH/7 DAY NON-SHRINKING AND NON-METALLIC.
3. SPECIAL CARE MUST BE TAKEN WHEN LIFTING ANCHOR BOLT CLUSTER, IN ORDER TO PREVENT ANCHOR BOLT TEMPLATE DISTORTION.
4. ANCHOR BOLT ASSEMBLY MUST BE ADEQUATELY SUPPORTED AND RESTRAINED TO PREVENT MOVEMENT OF THE CLUSTER DURING CONCRETE INSTALLATION.
5. IT IS THE RESPONSIBILITY OF THE FOUNDATION CONTRACTOR TO VERIFY THAT THE CORRECT ANCHOR BOLT TEMPLATE AND FOUNDATION SHOWN ON RESPECTIVE SITE DRAWINGS ARE BEING USED.
6. IT IS THE RESPONSIBILITY OF THE FOUNDATION DESIGN ENGINEER TO INSURE THAT THE ANCHORAGES PROVIDED ARE COMPATIBLE WITH THE PROPOSED FOUNDATION DESIGNS AND THAT THE CAPACITIES OF THE ANCHORAGES ARE NOT LIMITED BY THE STRENGTH OF THE FOUNDATIONS.

FILE NO.

Standard-SSV

**REVISIONS**

REV.	DESCRIPTION	DWGN	CHK	APP
1	NEW FORMAT	JWS	JDM	H.A
DATE: Nov/30/2005				

**DWG REFERENCE**




6718 WEST PLANK ROAD  
PEORIA, IL 61604  
TOLL FREE 800-727-ROHN

THIS DRAWING IS THE PROPERTY OF ROHN. IT IS NOT TO BE REPRODUCED, COPIED OR TRACED IN WHOLE OR IN PART WITHOUT OUR WRITTEN CONSENT.

**ANCHOR BOLT LAYOUT  
FOR 5/8" [16mm]Ø BOLTS (12A0202)**

DWGN: JWS	CHK'D: KTL	DATE: Oct/18/2005
ENGR: H.A		
DRAWING NO: B050570		REV: 1